



# Topdressings Types and benefits

Andy Spetch, British Sugar TOPSOIL

# Presentation

- Introduction
- What is a topdressing
- Why do we top-dress
- Selecting the correct dressing
- Product analysis
- Application rates
- Application

# Introduction

British Sugar National TOPSOIL Manager 20+ years

Worked for British Sugar for 32 years

Agricultural background

Volunteer groundsman for 25 years

RFU / IOG

National Volunteer Groundsman of the Year 2012



# Our Sites: Four advanced manufacturing plants processing sugar beet in the UK

Lowest cost sugar processor in the EU

## Newark

### Details

- Circa. 190 permanent and seasonal employees
- 700 growers supply 1.6 million tonnes of sugar beet every year

## Wissington

### Details

- Circa. 400 permanent and seasonal employees
- 1,000 UK growers supply over three million tonnes of sugar beet every year
- Largest beet sugar factory in the world

## Peterborough

Head Office  
Circa. 200 permanent employees

## Cantley

### Details

- Circa. 160 permanent and seasonal employees
- Over 700 growers supply over 1.3 million tonnes of sugar beet every year
- Cantley was the first sugar factory built in the UK in 1912

## Bury St Edmunds

### Details

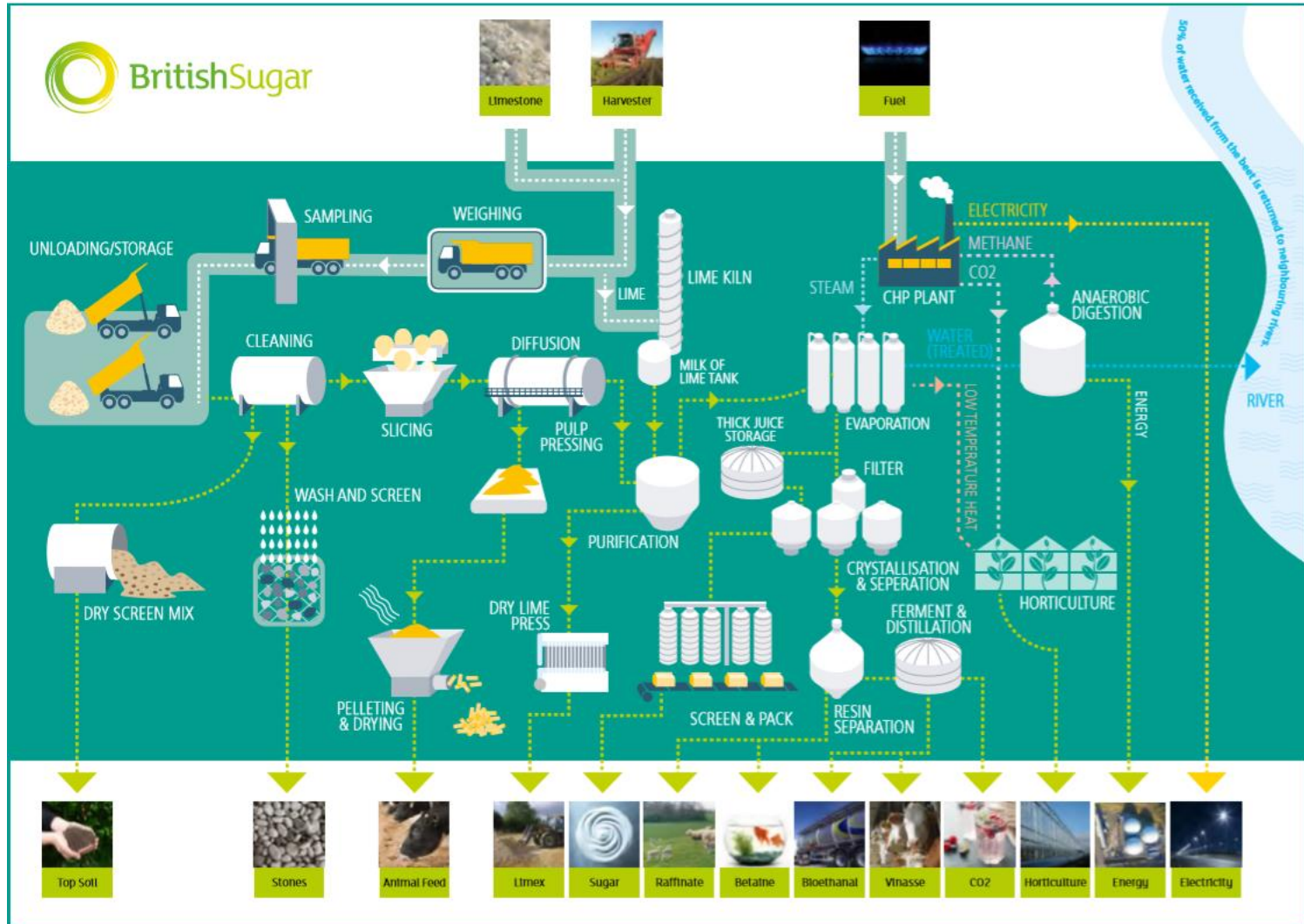
- Circa. 360 permanent and seasonal employees
- Over 700 growers supply over two million tonnes of sugar beet every year
- Bagged sugar packaging facility



# A sustainable operation: More than simply sugar

Power generation for a city the size of Peterborough

Fuel, animal feed, topsoil, pharmaceuticals



# #BackBritishSugar: Average 28 miles from farm to factory

Creating a level playing field for the British beet sugar industry

What can you do to show your support?

- Buy homegrown British Sugar - look out for the Silver Spoon brand

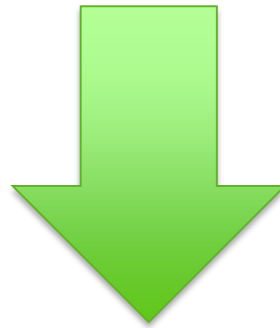


- Show your support for a great British industry on Twitter (@BritishSugar)
- or Instagram (@BackBritishSugar) using #BackBritishSugar



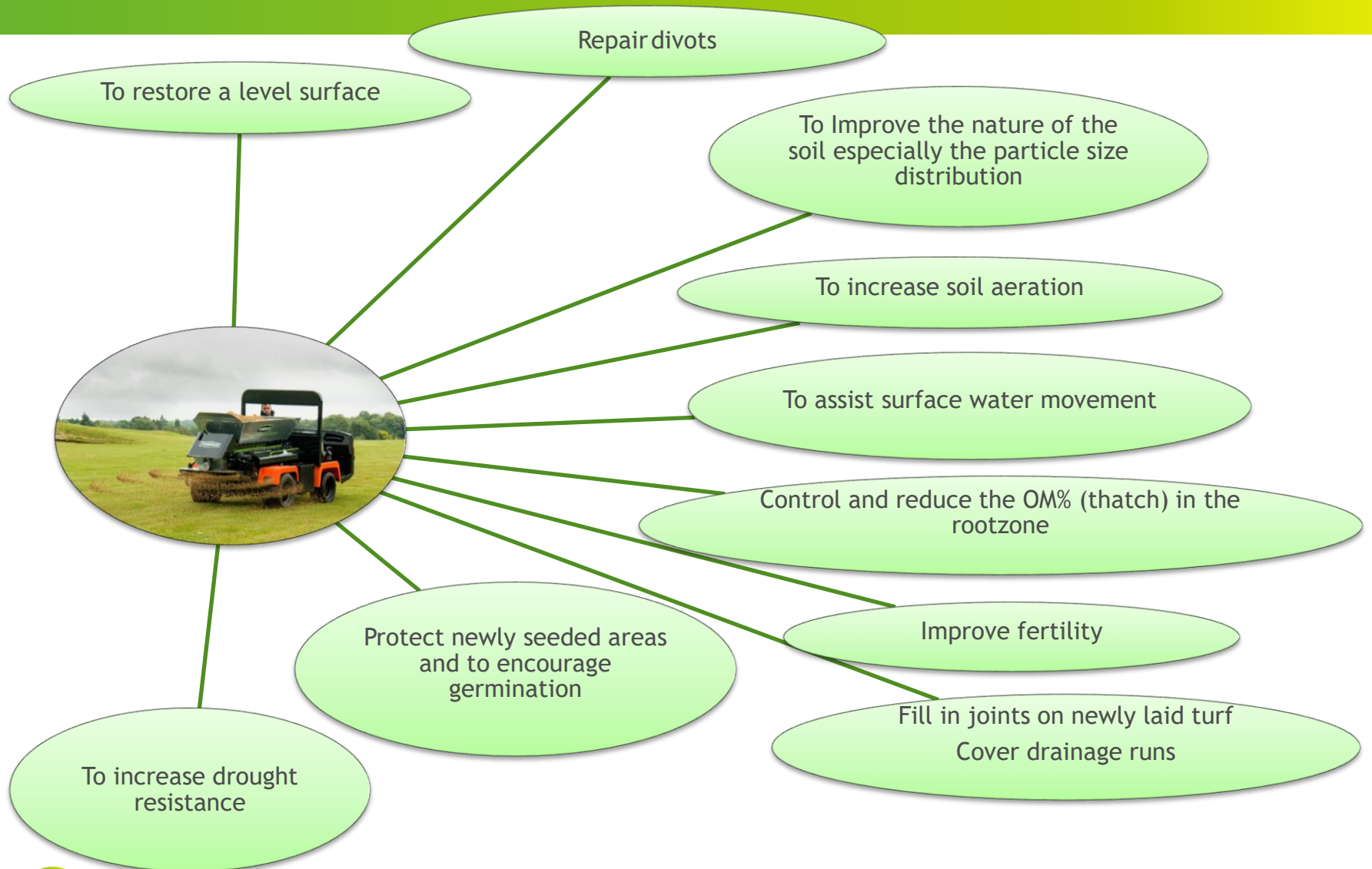
# What is top dressing?

It's the application of a sand or blend of sand, silt, clay & OM to an established playing surface



The composition of the dressing will depend on the purpose and type of surface it is to be used on

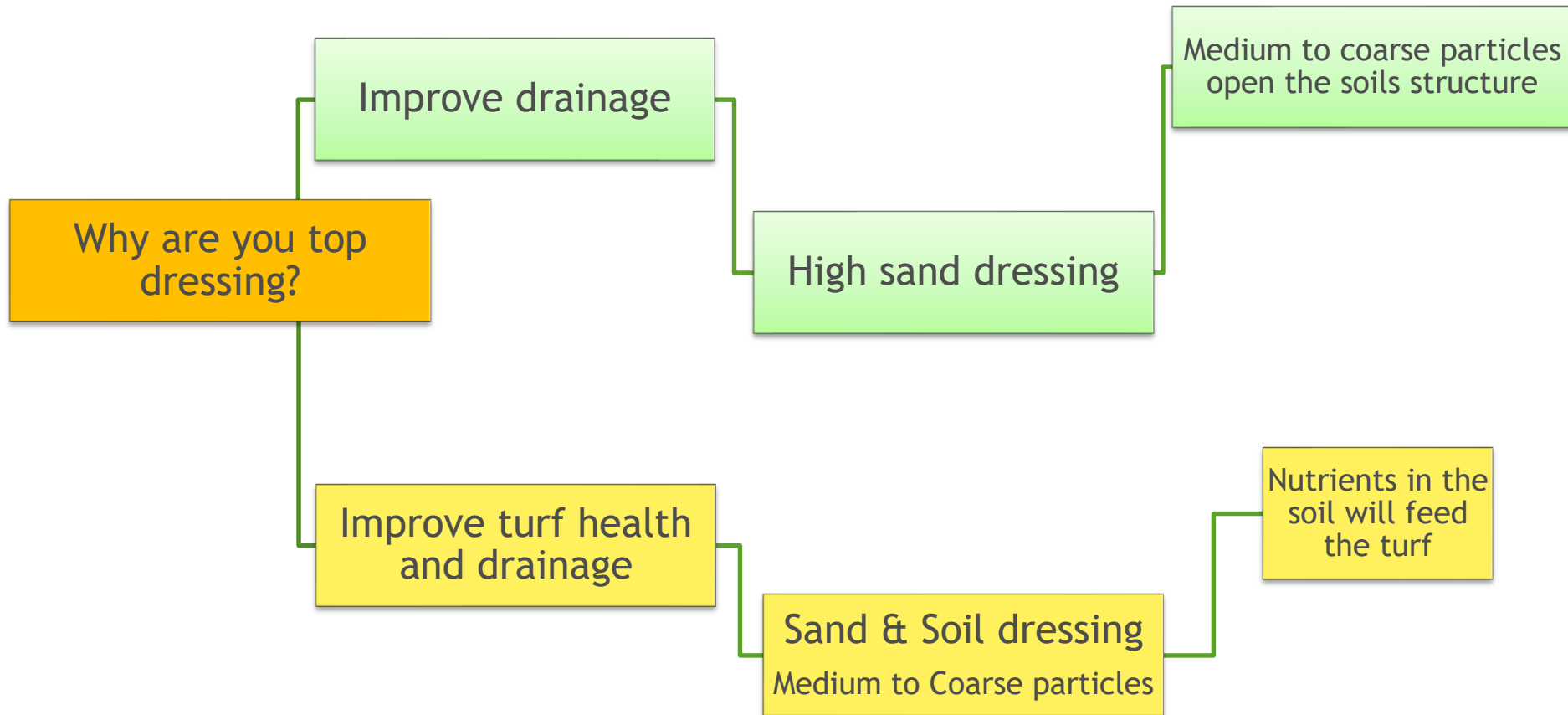
# 10 Reasons why we TOPDRESS?





# Selecting the right topdressing

*IOG / STRI can advise*



# Analysis and Testing

- Use accredited labs
  - STRI
  - Interpretive reports can help
- Test in situ soil as well as topdressing
  - Good suppliers will have product analysis
- Parameters to test for
  - Particle size distribution
  - Percolation
  - pH
  - Electrical conductivity
  - % OM
  - Plant available nutrients
  - P, K, Mg
  - Contaminants or phytotoxic elements
- Presence of physical contaminants
  - Glass, plastic



# Particle Size Analysis

CATEGORY	PARTICLE SIZE	%
Very coarse sand	2.0-1.0mm	3.1
Coarse sand	1.0-0.5mm	12.8
Medium sand	0.5-0.25mm	34.6
Fine sand	0.25-0.15mm	23.5
Very fine sand	0.15-0.05mm	13.9
Silt	0.05-0.002mm	6.9
Clay	<0.002mm	5.0
Organic Matter		1.0
Saturated Hydraulic Conductivity		10mm/hr

# When and How to Apply Topdressing

Traditionally used at the end of the playing season



New research is showing that smaller amounts applied more often can give better results

Apply by hand or by machine





# Typical Application Rates

	Typical Application Rates
Golf Greens	15kg/m <sup>2</sup>
Fairways & Lawns	10kg/m <sup>2</sup>

Consider the outcome you want  
Avoid grass coverage  
How will you be applying the dressing?

# Topdressing should be part of a bigger maintenance plan

## Aeration

Slitting / Hollow cone / Verti drain / Rotary blades



## Over seeding



## Scarifying / Harrowing

# Summary

A top dressing can be just sand or a blend of sand, silt, clay & OM

Understand why you are top dressing

Know what you are working with.  
Test your in situ soil & top dressing

Top dressing should be part of a maintenance programme

Take advice from the Agronomists, Consultants, STRI

**Sports**&Turf<sup>◆</sup>



# Sports&Turf - Features and Benefits at a Glance

Features	Benefits
90% total sand 50% V Coarse to Medium sand	<ul style="list-style-type: none"> <li>• Free draining</li> <li>• Easy to apply</li> </ul>
Sub Angular Sand	<ul style="list-style-type: none"> <li>• Open free draining</li> <li>• Less likely to cap</li> </ul>
Screened to 6mm	<ul style="list-style-type: none"> <li>• No issues with stones</li> </ul>
Typically contains 50% Coarse and Medium Sand	<ul style="list-style-type: none"> <li>• Won't block or cap existing fairway material</li> </ul>
BS3882:2015 compliant topsoil	<ul style="list-style-type: none"> <li>• Promotes and sustains growth                             <ul style="list-style-type: none"> <li>• Nutrient retentive</li> </ul> </li> <li>• Assists seed establishment</li> </ul>
STRI Analysed	<ul style="list-style-type: none"> <li>• Peace of mind</li> </ul>
Saturated Hydraulic Conductivity Average 10mm/hr	<ul style="list-style-type: none"> <li>• Performs in line with a Soil Based Pitch / Fairway standards</li> <li>• Assuming there is a good structure and a maintenance plan</li> </ul>

# STRI Trials



Nutrients in the  
10% of Topsoil feed  
the grass

**"Sports&Turf is suitable for use on natural soil constructions and offers the advantage of providing nutritional benefit to the turf, as evidenced by turf green-up seen on test plots in Autumn 2017"**

Soil scientist Dr Christian Spring BSc (Hons), PhD

# *British Sugar TOPSOIL Product Range*

## *Available in bulk loads or bulk bags*

### **Landscape** **20**

Landscape20 is a fully-analysed and compliant to BS3882:2015, sandy loam, TOPSOIL. It is ideal for general landscaping projects such as seeding and turfing .

### **Hort** **Loam**

HortLoam is a BS3882:2015 compliant planting topsoil. With optimum reserves of organic matter and nutrients, HortLoam is ideal for planting rootball trees, shrub bed, retained planters and vegetable planting projects.

### **Sports&Turf**

Sports & Turf is ideal for use as a topdressing to repair badly damaged and divoted surfaces or for constructing tees. The blend of medium to coarse sand and soil gives good drainage whilst promoting grass establishment and growth.

### **SubSoil**

General Purpose subsoil: Compliant to BS8601:2013 as a multi purpose subsoil. Suitable for general landscaping purposes, trees, shrubs and amenity grasses

## To find out more about British Sugar TOPSOIL

To arrange a visit or for more information on TOPSOIL products call 0870 240 2314  
or visit our web site [www.bstopsoil.co.uk](http://www.bstopsoil.co.uk)

 @Topsoil\_BS



# BIGGA

Education **Supporter**

