



Topdressings Types and benefits

Andy Spetch, British Sugar TOPSOIL

Presentation

- Introduction
- What is a topdressing
- Why do we top-dress
- Selecting the correct dressing
- Product analysis
- Application rates
- Application

Introduction

British Sugar National TOPSOIL Manager 20+ years

Worked for British Sugar for 32 years

Agricultural background

Volunteer groundsman for 25 years

RFU / IOG

National Volunteer Groundsman of the Year 2012



Our Sites: Four advanced manufacturing plants processing sugar beet in the UK

Lowest cost sugar processor in the EU

Newark

Details

- Circa. 190 permanent and seasonal employees
- 700 growers supply 1.6 million tonnes of sugar beet every year

Wissington

Details

- Circa. 400 permanent and seasonal employees
- 1,000 UK growers supply over three million tonnes of sugar beet every year
- Largest beet sugar factory in the world

Peterborough

Head Office
Circa. 200 permanent employees

Cantley

Details

- Circa. 160 permanent and seasonal employees
- Over 700 growers supply over 1.3 million tonnes of sugar beet every year
- Cantley was the first sugar factory built in the UK in 1912

Bury St Edmunds

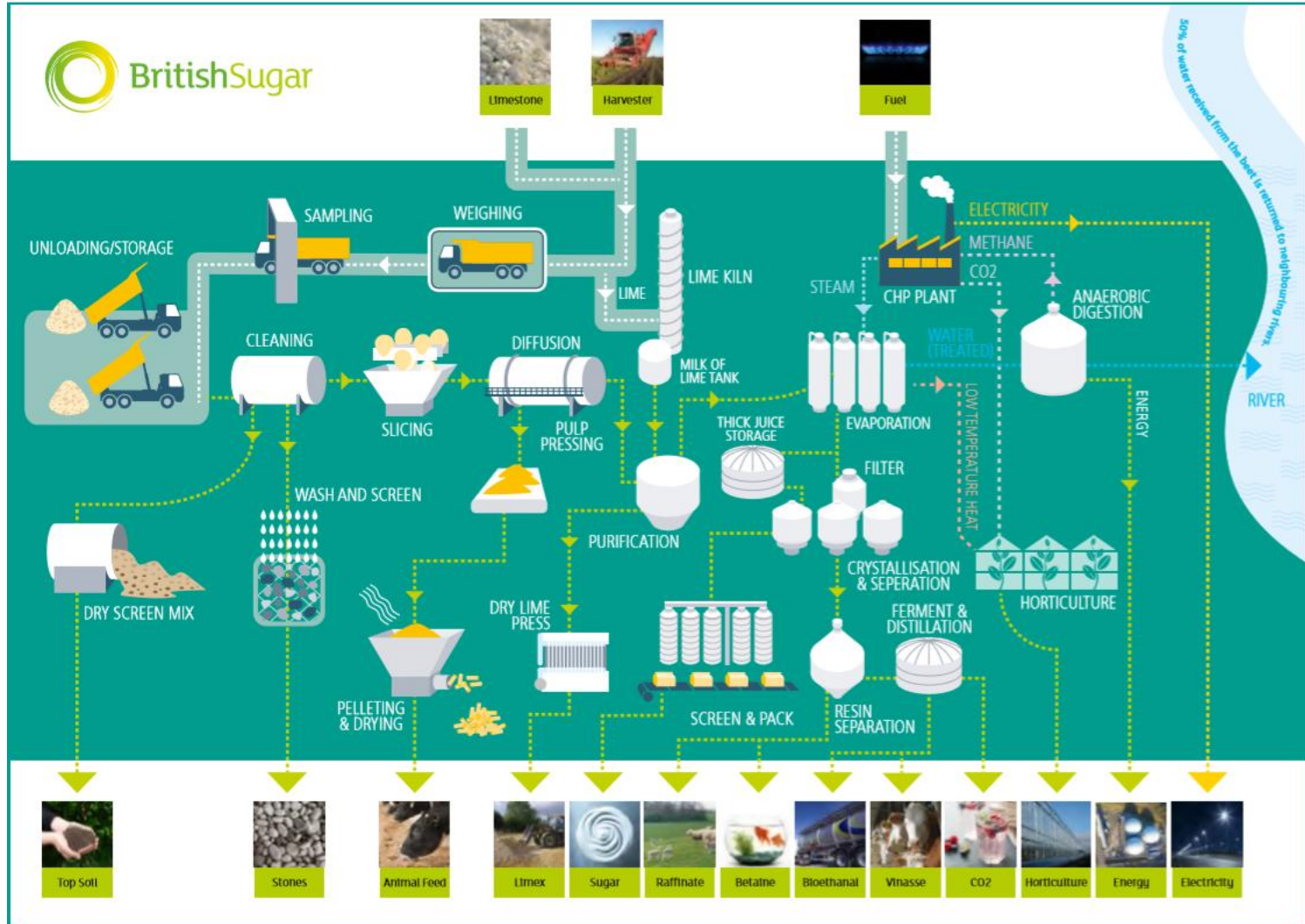
Details

- Circa. 360 permanent and seasonal employees
- Over 700 growers supply over two million tonnes of sugar beet every year
- Bagged sugar packaging facility

A sustainable operation: More than simply sugar

Power generation for a city the size of Peterborough

Fuel, animal feed, topsoil, pharmaceuticals



#BackBritishSugar: Average 28 miles from farm to factory

Creating a level playing field for the British beet sugar industry

What can you do to show your support?

- Buy homegrown British Sugar - look out for the Silver Spoon brand

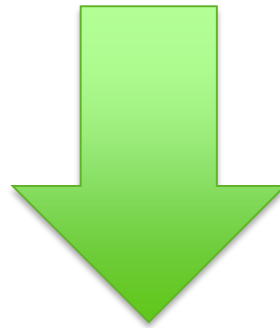


- Show your support for a great British industry on Twitter (@BritishSugar)
- or Instagram (@BackBritishSugar) using #BackBritishSugar



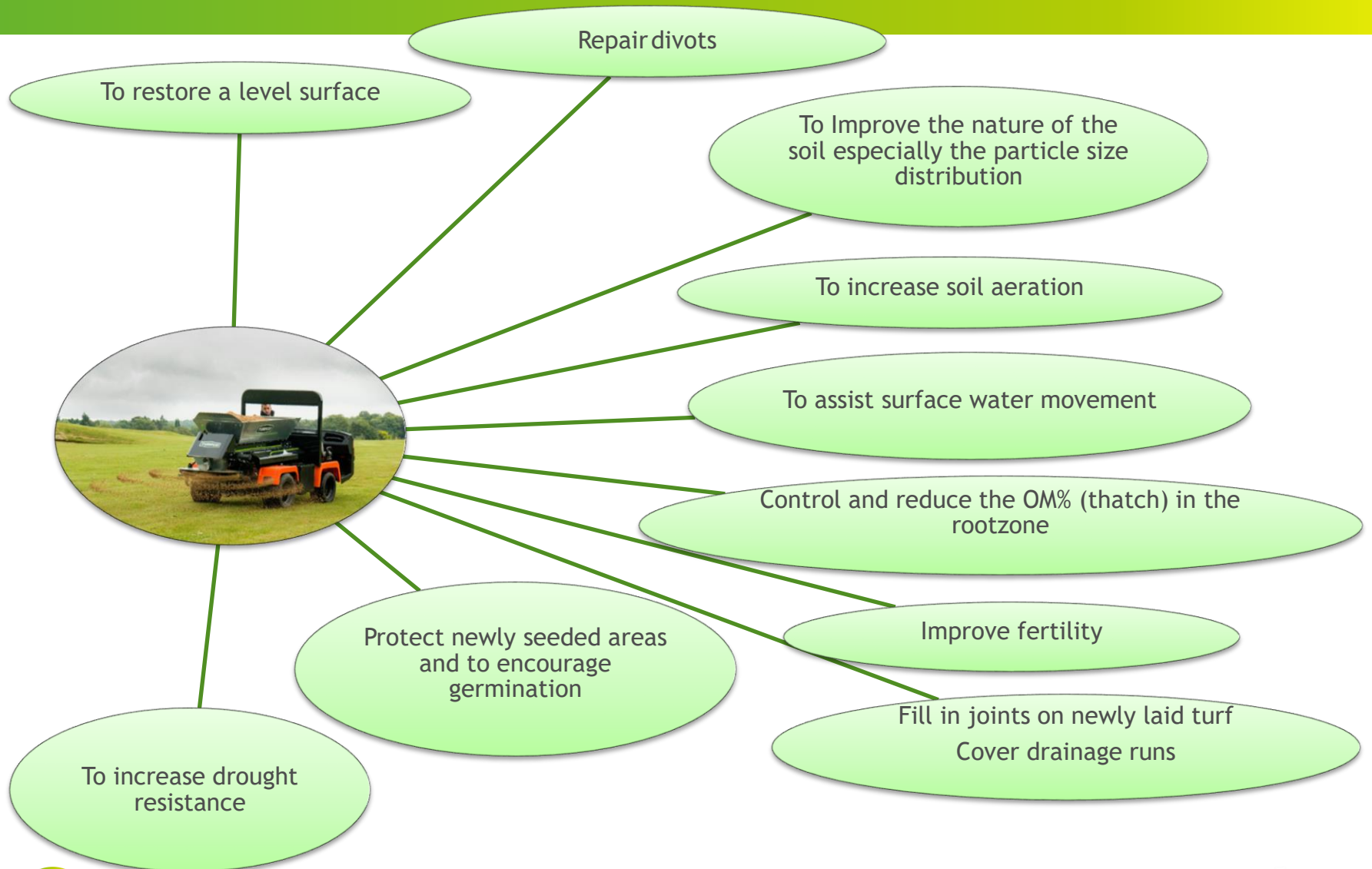
What is top dressing?

It's the application of a sand or blend of sand, silt, clay & OM to an established playing surface



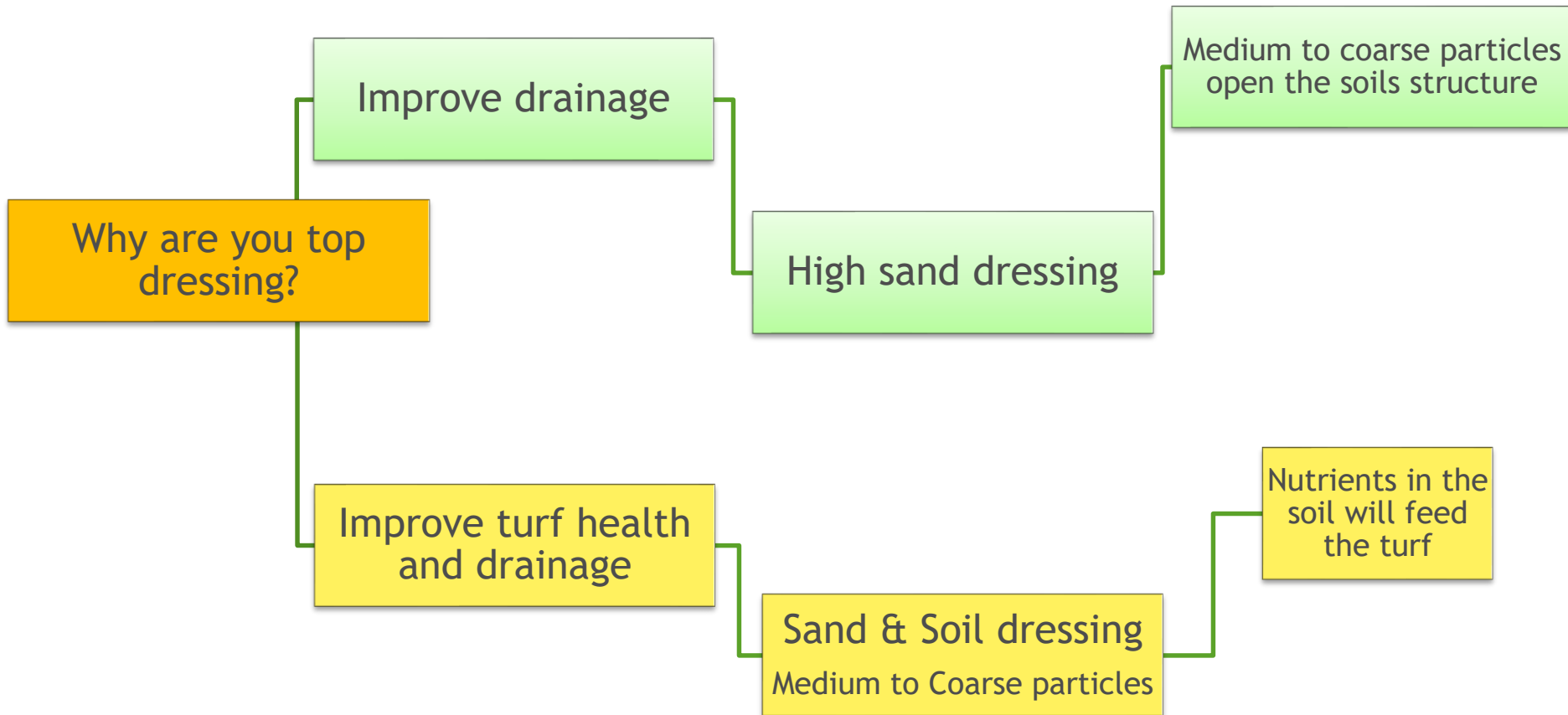
The composition of the dressing will depend on the purpose and type of surface it is to be used on

10 Reasons why we TOPDRESS?



Selecting the right topdressing

IOG / STRI can advise



Analysis and Testing

- Use accredited labs
 - STRI
 - Interpretive reports can help
- Test in situ soil as well as topdressing
 - Good suppliers will have product analysis
- Parameters to test for
 - Particle size distribution
 - Percolation
 - pH
 - Electrical conductivity
 - % OM
 - Plant available nutrients
 - P, K, Mg
 - Contaminants or phytotoxic elements
- Presence of physical contaminants
 - Glass, plastic



Particle Size Analysis

CATEGORY	PARTICLE SIZE	%
Very coarse sand	2.0-1.0mm	3.1
Coarse sand	1.0-0.5mm	12.8
Medium sand	0.5-0.25mm	34.6
Fine sand	0.25-0.15mm	23.5
Very fine sand	0.15-0.05mm	13.9
Silt	0.05-0.002mm	6.9
Clay	<0.002mm	5.0
Organic Matter		1.0
Saturated Hydraulic Conductivity		10mm/hr

When and How to Apply Topdressing

Traditionally used at the end of the playing season



New research is showing that smaller amounts applied more often can give better results

Apply by hand or by machine



Typical Application Rates

	Typical Application Rates
Golf Greens	15kg/m ²
Fairways & Lawns	10kg/m ²

Consider the outcome you want
Avoid grass coverage
How will you be applying the dressing?

Topdressing should be part of a bigger maintenance plan

Aeration

Slitting / Hollow cone / Verti drain / Rotary blades



Over seeding



Scarifying / Harrowing

Summary

A top dressing can be just sand or a blend of sand, silt, clay & OM

Understand why you are top dressing

Know what you are working with.
Test your in situ soil & top dressing

Top dressing should be part of a maintenance programme

Take advice from the Agronomists, Consultants, STRI

Sports&Turf[◆]

Sports&Turf - Features and Benefits at a Glance

Features	Benefits
90% total sand 50% V Coarse to Medium sand	<ul style="list-style-type: none"> • Free draining • Easy to apply
Sub Angular Sand	<ul style="list-style-type: none"> • Open free draining • Less likely to cap
Screened to 6mm	<ul style="list-style-type: none"> • No issues with stones
Typically contains 50% Coarse and Medium Sand	<ul style="list-style-type: none"> • Won't block or cap existing fairway material
BS3882:2015 compliant topsoil	<ul style="list-style-type: none"> • Promotes and sustains growth <ul style="list-style-type: none"> • Nutrient retentive • Assists seed establishment
STRI Analysed	<ul style="list-style-type: none"> • Peace of mind
Saturated Hydraulic Conductivity Average 10mm/hr	<ul style="list-style-type: none"> • Performs in line with a Soil Based Pitch / Fairway standards • Assuming there is a good structure and a maintenance plan

STRI Trials



Nutrients in the
10% of Topsoil feed
the grass

"Sports&Turf is suitable for use on natural soil constructions and offers the advantage of providing nutritional benefit to the turf, as evidenced by turf green-up seen on test plots in Autumn 2017"

Soil scientist Dr Christian Spring BSc (Hons), PhD

British Sugar TOPSOIL Product Range

Available in bulk loads or bulk bags

Landscape **20**

Landscape20 is a fully-analysed and compliant to BS3882:2015, sandy loam, TOPSOIL. It is ideal for general landscaping projects such as seeding and turfing .

Hort **Loam**

HortLoam is a BS3882:2015 compliant planting topsoil. With optimum reserves of organic matter and nutrients, HortLoam is ideal for planting rootball trees, shrub bed, retained planters and vegetable planting projects.

Sports&Turf

Sports & Turf is ideal for use as a topdressing to repair badly damaged and divoted surfaces or for constructing tees. The blend of medium to coarse sand and soil gives good drainage whilst promoting grass establishment and growth.

SubSoil

General Purpose subsoil: Compliant to BS8601:2013 as a multi purpose subsoil. Suitable for general landscaping purposes, trees, shrubs and amenity grasses

To find out more about British Sugar TOPSOIL

To arrange a visit or for more information on TOPSOIL products call 0870 240 2314
or visit our web site www.bstopsoil.co.uk



@Topsoil_BS

