



British Sugar TOPSOIL

A House Builders Guide



BritishSugar

An AB Sugar company

Presentation

Introduction the ABF / British Sugar

British Sugar TOPSOIL

- Sampling & Analysis

Subsoil preparation

Handling & placing topsoil

Questions to ask suppliers

Parent company: Associated British Foods plc



TWININGS



PRIMARK



AB MAURI



British Sugar UK & Ireland: the facts today...

- A leading UK competitor supplying all the major blue-chip customers
 - Supply 60% of the UK's Sugar
 - Lowest cost sugar processor in the EU
- Four factories processing beet
 - More than 3,600 growers
 - Bioethanol refinery
 - Horticultural Business
 - Electricity from Anaerobic Digestion



Annually we purchase 7.5MT of Sugar Beet from 3.6K growers between September to February

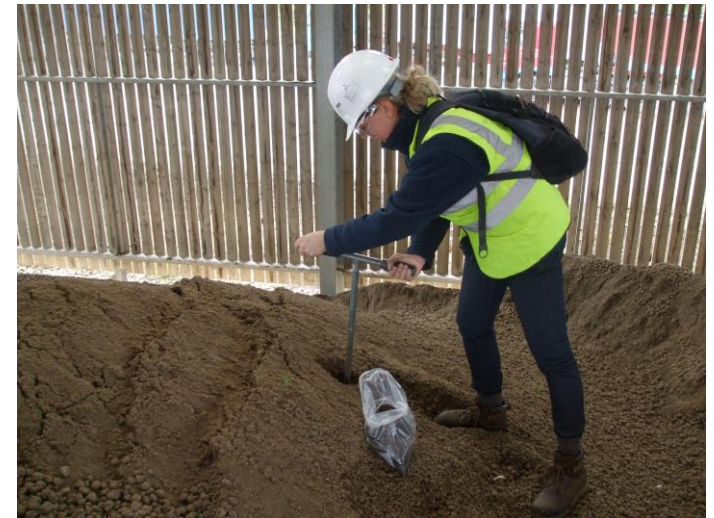


The topsoil is excavated, dried and blended over 2 years



Sampling & Analysis: Ensure a representative sample is taken

- Samples are taken in accordance at least to BS3882:2015 every 5,000m³ (8KT)
- 25 sub samples are taken to ensure the bulk sample is representative
- We analyse our products over 30 times each year
- Laboratory analysis is undertaken at a UKAS and MCERT accredited laboratory
- Tim O'Hare Associates report includes
 - Declaration of compliance BS3882:2015
 - Analytical schedule
 - Results of analysis
 - Conclusion
 - Recommendations
 - Certificate of Analysis



Analytical Schedule: Over 50 parameters are checked each time

- **PSA and stone content**
- pH and EC values
- **Exchangeable sodium %**
- Major plant nutrients
- **OM%**
- C:N ratio
- **Heavy metals**
- Total cyanide and total (mono) phenols
- Aromatic and aliphatic TPH (C5-C35 banding)
- **Speciated PAHs (US EPA 16 suite)**
- Benzene, toluene, ethylbenzene, xylene
- **Asbestos screen**



Potential Contaminants levels are measured against recognised industry standards

British Sugar TOPSOIL Product Range

Landscape²⁰

Landscape²⁰ is a fully-analysed and compliant to BS3882:2015, sandy loam, TOPSOIL. It is ideal for general landscaping projects such as seeding and turfing .

Hort^{Loam}

Hort^{Loam} is a BS3882:2015 compliant planting topsoil. With optimum reserves of organic matter and nutrients, Hort^{Loam} is ideal for planting rootball trees, shrub bed, retained planters and vegetable planting projects.

Sports & Turf^{Loam}

Sports & Turf is a dressing that is ideal for use on soil based winter sports pitches, golf approaches and lawns.

A blend of 80% medium to coarse sub angular sand with 20% British Sugar TOPSOIL providing the optimum environment for seed establishment and growth..

British Sugar TOPSOIL is used in Landscaping & Amenity



Presentation

Introduction the ABF / British Sugar

British Sugar TOPSOIL

- Sampling & Analysis

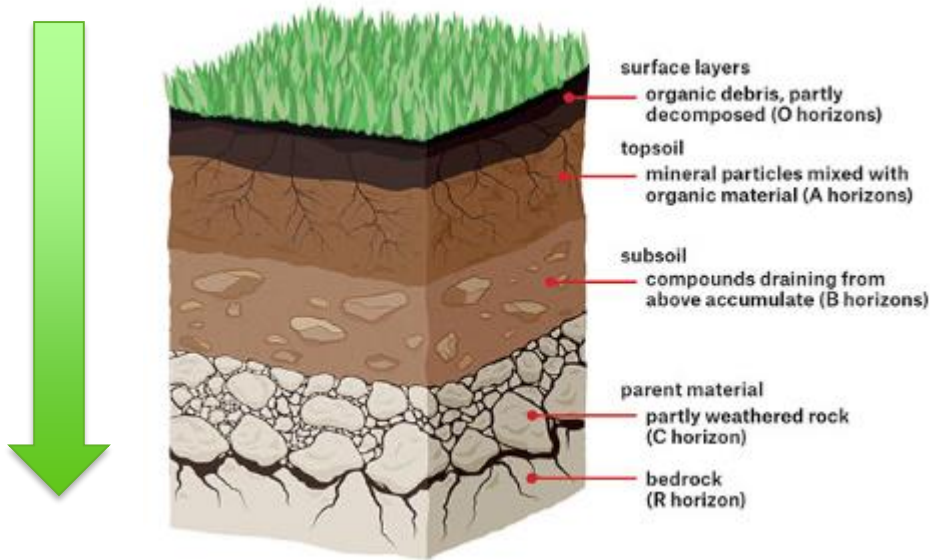
Subsoil preparation

Handling & placing topsoil

Questions to ask suppliers

Topsoil will only function if it is in sync with its subsoil

A Soil Profile should allow free movement of water, air and roots



Topsoil: Typically the top 30cm, darker and fertile

Subsoil: Directly under topsoil, lighter in colour, less fertility

Parent material / Bedrock: can be solid rock which breaks down with weathering

Sub soil: Needs to be de-compacted to allow free movement of water, air and roots



If importing subsoil refer to BS8601:2013

Presentation

Introduction the ABF / British Sugar

British Sugar TOPSOIL

- Sampling & Analysis

Subsoil preparation

Handling & placing topsoil

Questions to ask suppliers

Handling & Placing the Topsoil

Create a clean, segregated dry holding area for the topsoil & cover

Keep human & mechanical traffic off landscape / garden area's

De-compact the subsoil

Set levels for topsoil: 300mm max

Work away from yourself to avoid over compacting newly laid topsoil

Slightly consolidate new topsoil

Work off board when planting or turfing



Questions for suppliers

Visiting is always recommended

- What is the source of your topsoil is it BS3882:2015 compliant?
 - Greenfield / Brownfield / Skip / Manufactured ?
 - Do you use PAS100 compost?
 - Is there an auditable process ?
 - Are quality ingredients being used?
- How is the topsoil stored?
- What tonnage is available?
 - Period of availability ?
 - Is there enough for my project
- What is their sampling protocol ?
 - Who does your sampling?
 - Can I have a copy of your analysis?
 - Date of last analysis?
 - Suite of analysis ?
- Do you have testimonials?
- Affiliation to Trade Organisations? (BALI)



Visit our production facility and find out more about quality topsoil

To arrange a visit or for more information on TOPSOIL products call 0870 240 2314
or visit our web site www.bstopsoil.co.uk



@Topsoil_BS



PlantNetwork

